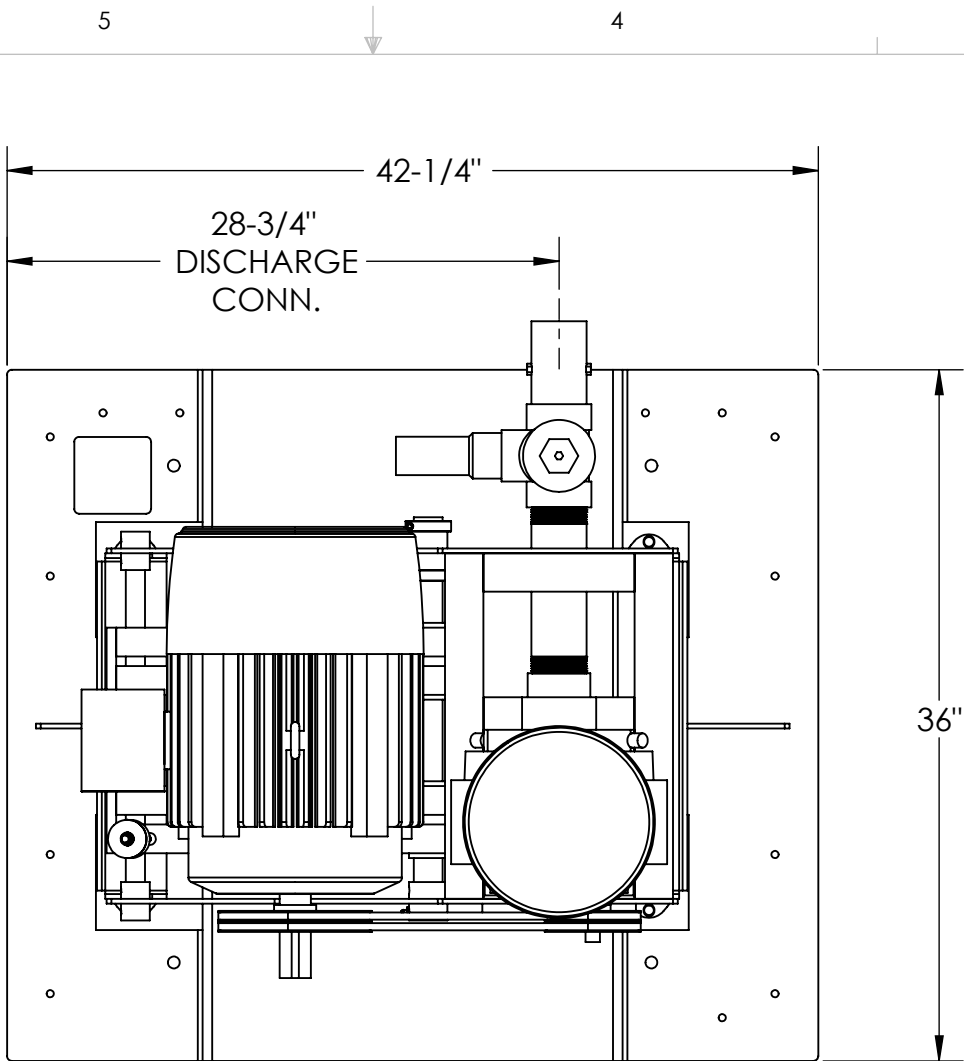


ITEM NO.	DESCRIPTION	3C1/QTY.
1	Inlet Filter/Silencer	1
2	UBP HYBRID Blower	1
3	NEMA Motor	1
4	V-Belt Drive Assembly @ 1.4 Service Factor	1
5	3C1H Belt Guard w/ Easy Access Panel	1
6	3C1H Blower Base w/ Auto Tension Motor Base	1
7	Heavy Duty Isolation Mount	4
8	3C1H Sub-Base	1
9	Discharge Expansion Joint	1
10	Compact Discharge Silencer	1
11	Spring Loaded PRV	1
12	Discharge Check Valve	1
13	3C1H Acoustical Enclosure	1
14	Inlet Filter Vacuum Gauge	1
15	Discharge Pressure Gauge	1
16	Discharge Thermometer	1

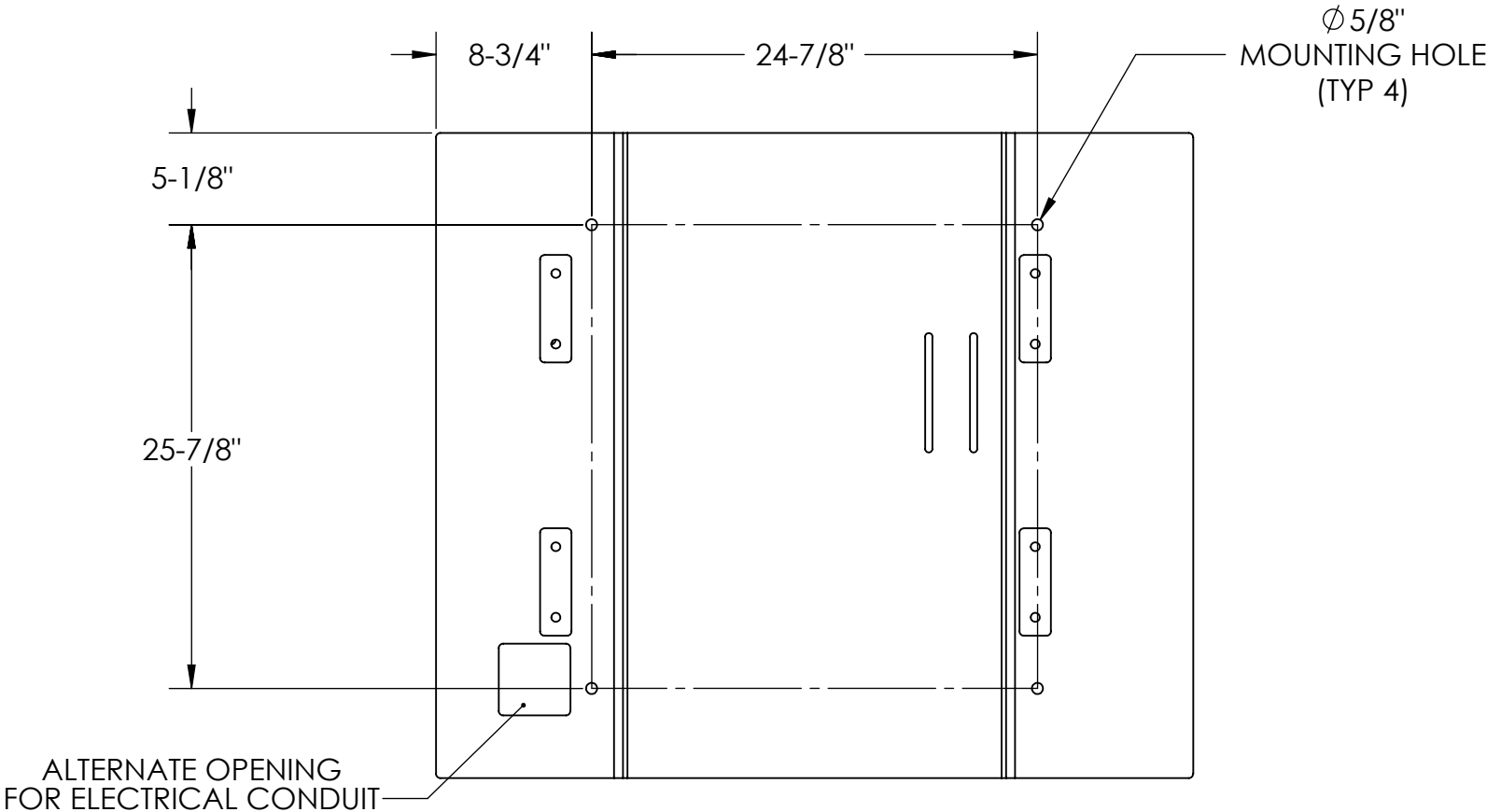
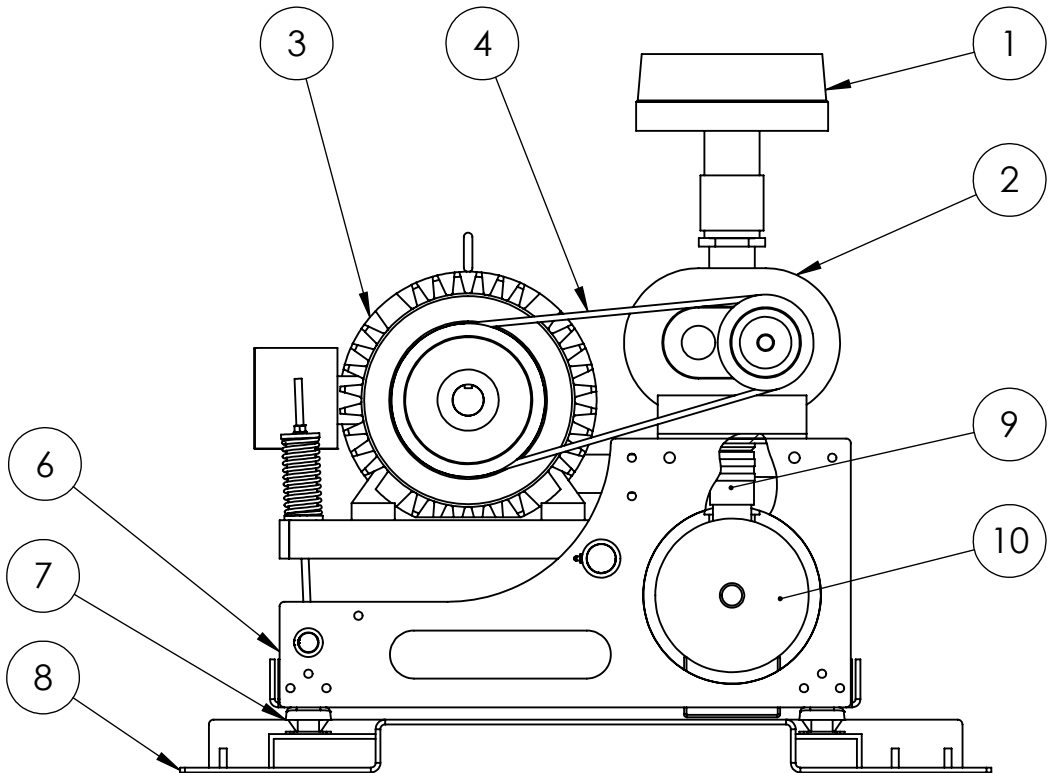
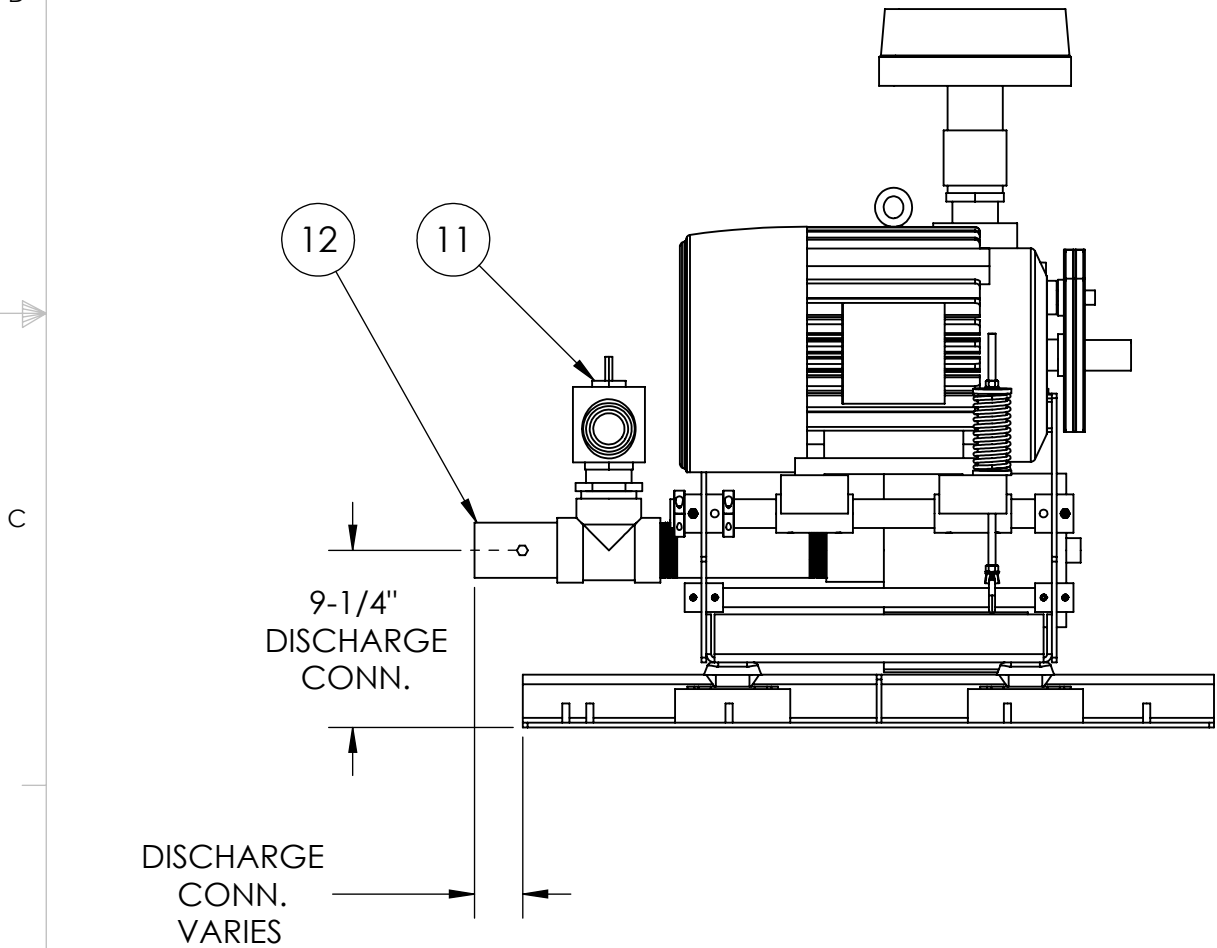
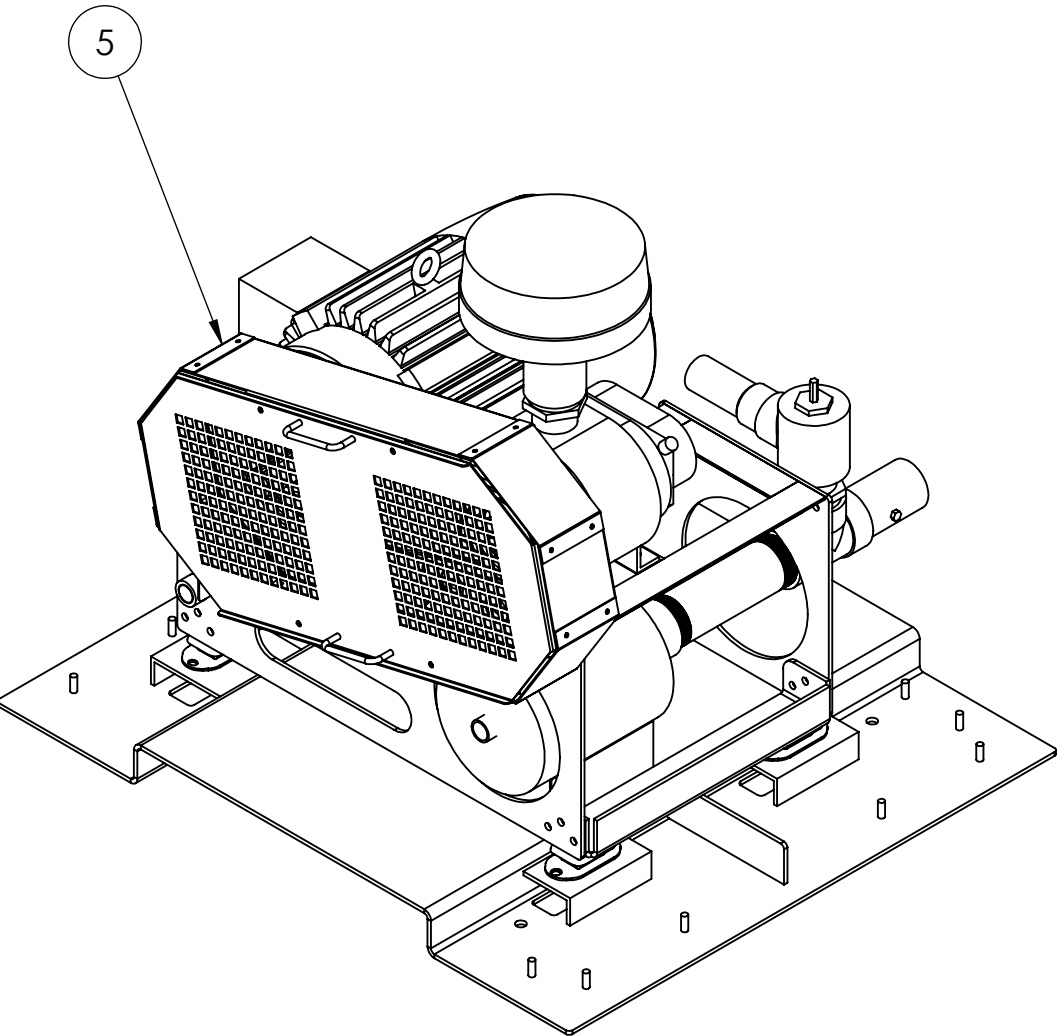
NOTE:

1. ITEMS 13-16 ARE OPTIONAL AND SHOWN ON NEXT SHEET.

2. SEE PROJECT-SPECIFIC SUBMITTAL FOR COMPONENT MODEL NUMBERS, UNIT WEIGHT, AND OPTIONAL COMPONENTS NOT SHOWN HERE.




REVISIONS				
ZONE	REV.	DESCRIPTION	DATE	APPROVED
	A	DRAWING CREATED	9/7/2010	BD
	B	BASE IMPROVEMENTS	6/8/2011	BD
	C	SUB-BASE AND ENCLOSURE REVISIONS	8/9/2011	BD



NOTE:

1. INSTALL AND OPERATE ACCORDING TO O&M MANUAL.

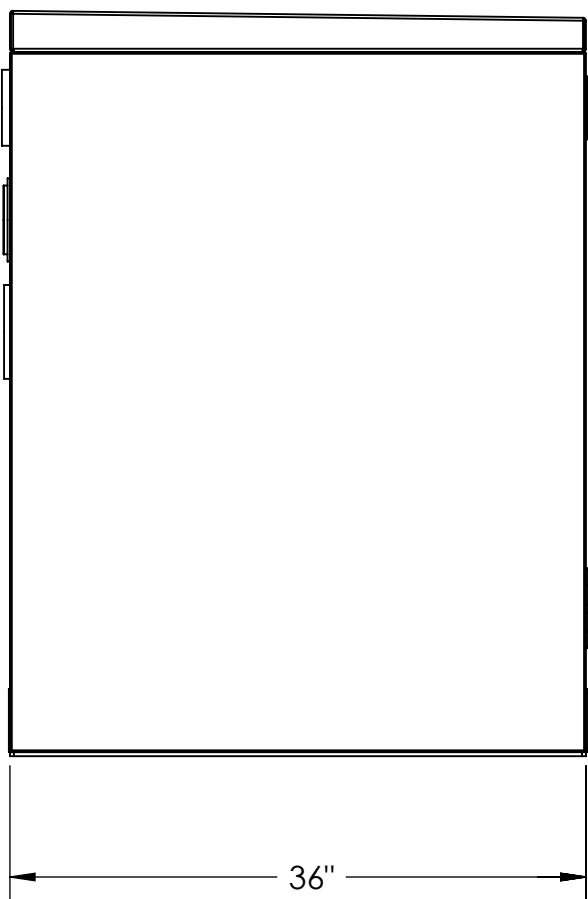
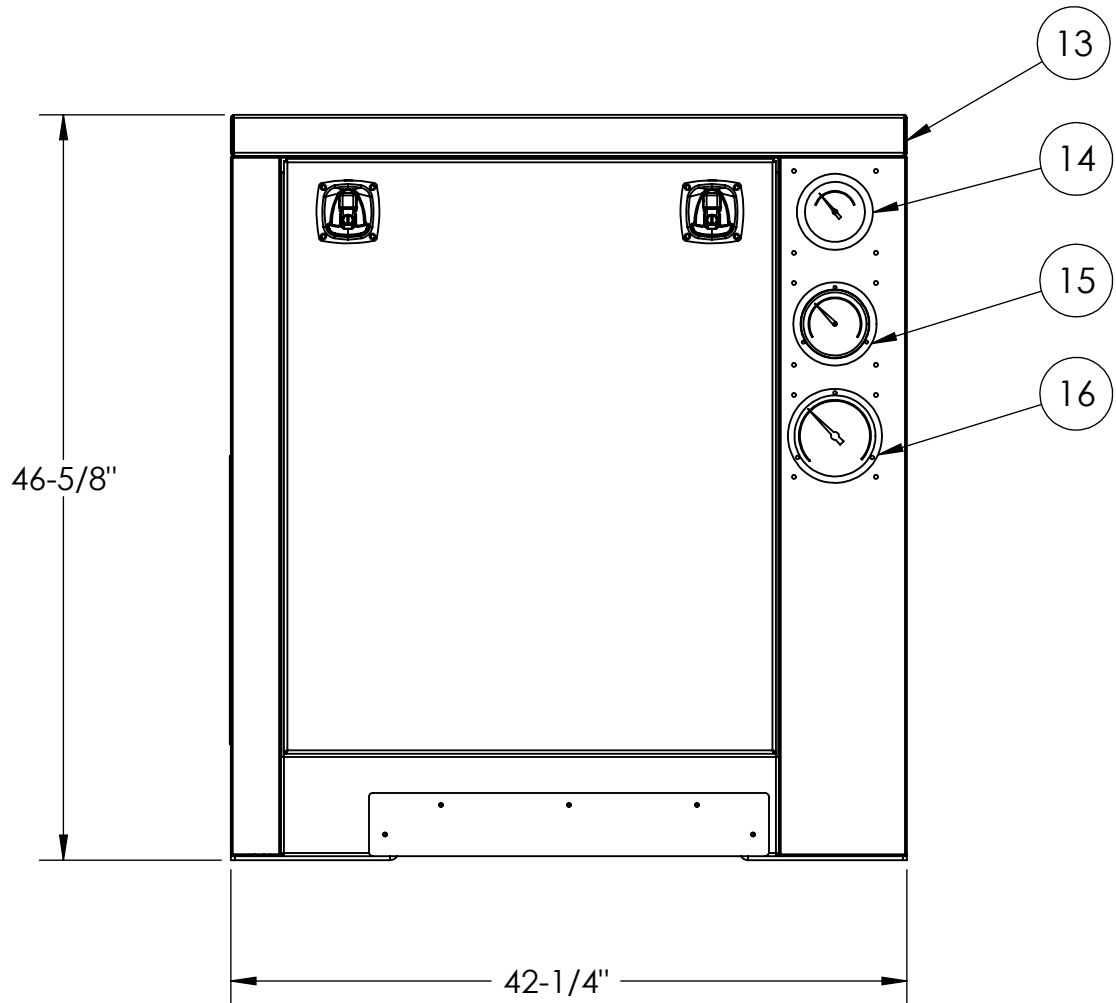
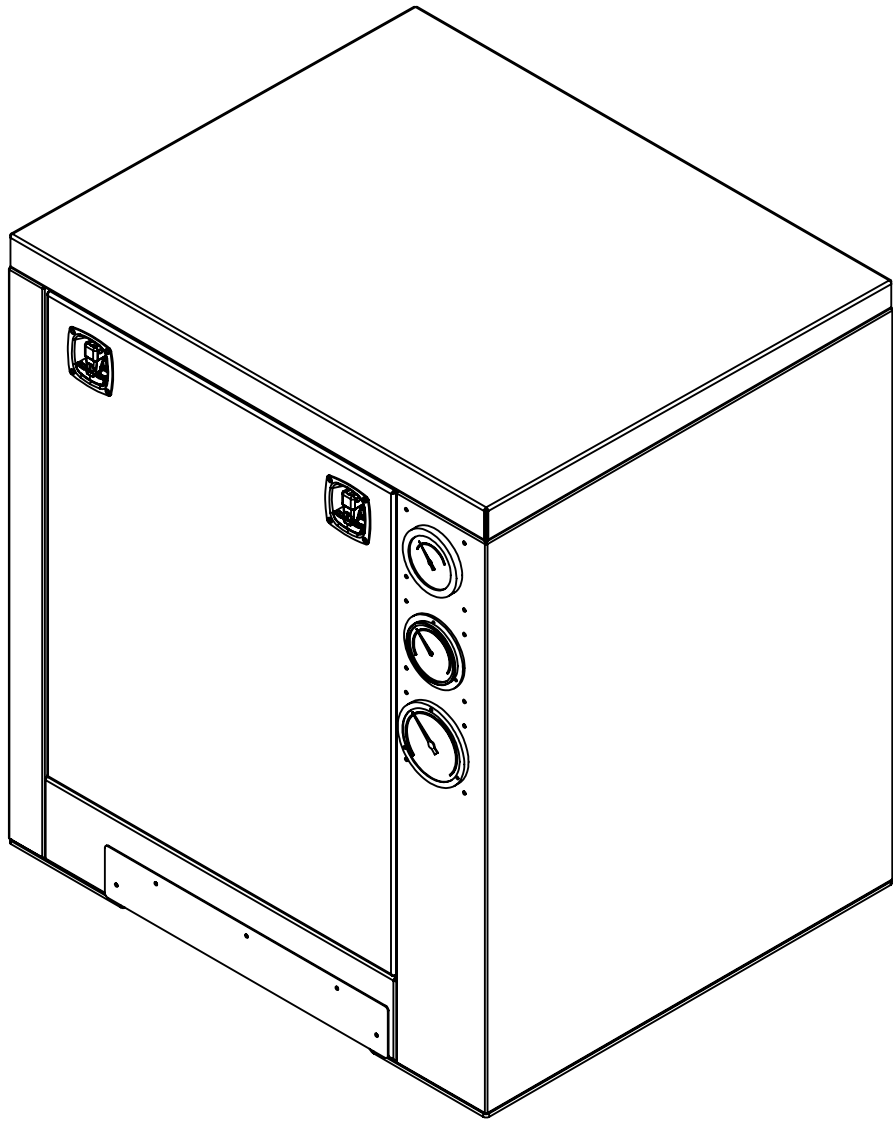
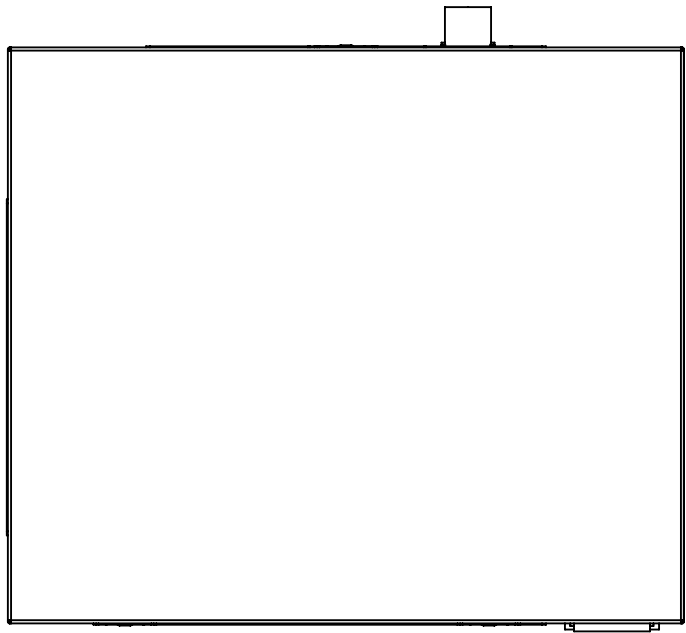
2. DIMENSIONS SUBJECT TO CHANGE WITHOUT NOTICE.

UNLESS OTHERWISE SPECIFIED:		NAME	DATE	 UNIVERSAL BLOWER PAC, INC. 440 PARK 32 WEST DRIVE NOBLESVILLE, IN 46060-9252 PHONE: 317-773-7256 The Original Manufacturer www.universalblowerpac.com	
DIMENSIONS ARE IN INCHES		DRAWN	BD		
TOLERANCES:		CHECKED		TITLE:	
FRACTIONAL TO USER CONNECTIONS: ±1"		ENG APPR.			
FRACTIONAL TO MOUNTING LOCATIONS: 1/4"		MATERIAL		3C HYBRID Size 1	
OTHER FRACTIONAL: ±1		STOCK SIZE			
ANGULAR: MACH±0.5 BEND ±2		FINISH		SIZE DWG. NO.	
TWO PLACE DECIMAL ±0.05		DO NOT SCALE DRAWING			
THREE PLACE DECIMAL ±0.005				3C1H	
PROPRIETARY AND CONFIDENTIAL				SCALE: 1:10	
THE INFORMATION CONTAINED IN THIS DRAWING IS THE SOLE PROPERTY OF UNIVERSAL BLOWER PAC, INC. ANY REPRODUCTION IN PART OR AS A WHOLE WITHOUT THE WRITTEN PERMISSION OF UNIVERSAL BLOWER PAC, INC. IS PROHIBITED.				SHEET 1 OF 2	

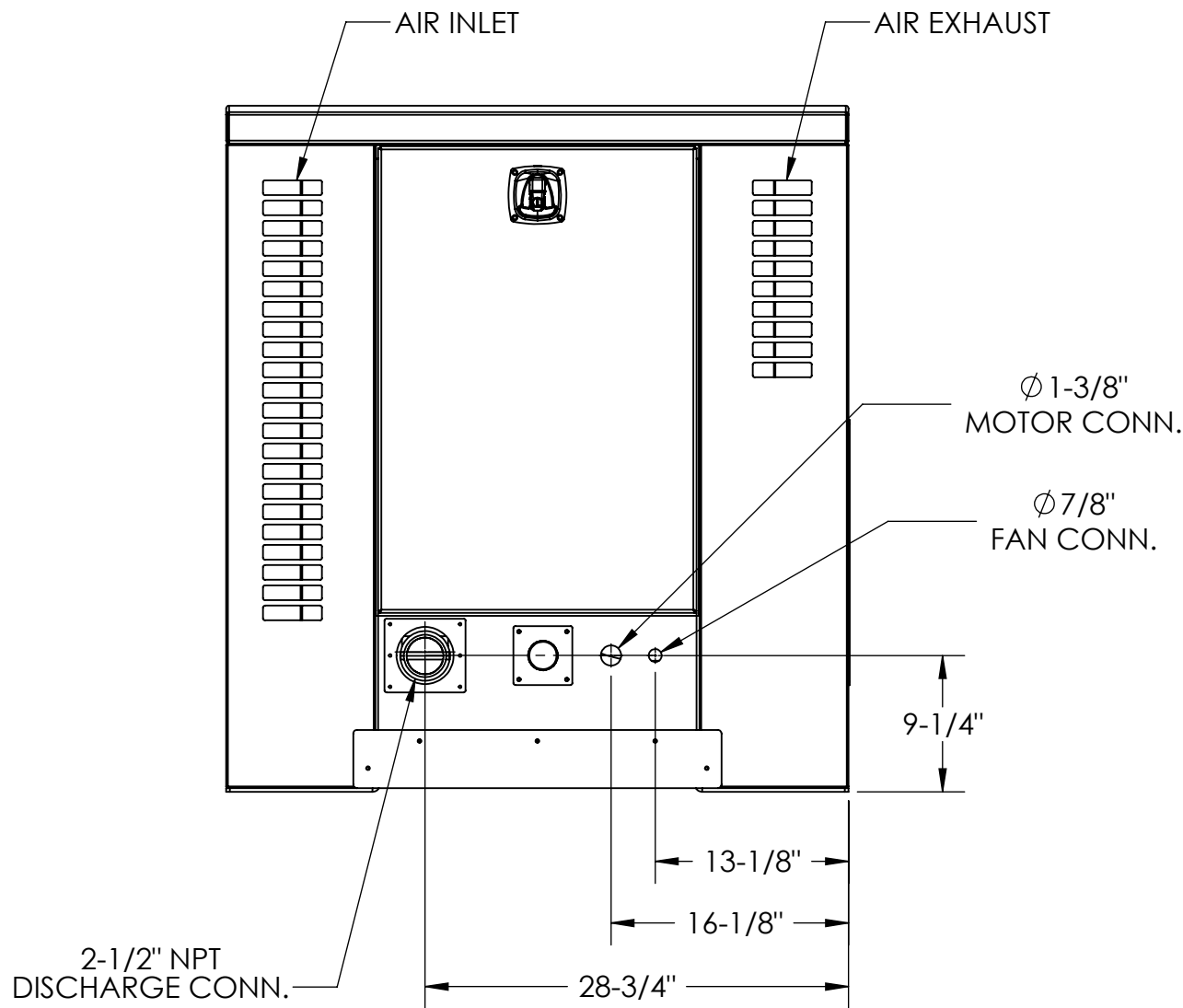
ENCLOSURE NOTES:

1. CONSTRUCTED OF POWDER COATED ALUMINUM AND STEEL
2. LINED WITH 2" ACOUSTICAL FOAM
3. QTY (2) REMOVABLE PANELS (1 FRONT, 1 REAR)
4. QTY (3) LOCKING COMPRESSION LATCHES TOTAL
5. QTY (1) SUPPLEMENTARY ACCESS PANEL (LEFT SIDE)
6. QTY (1) ELECTRICAL EXHAUST FAN (~1A @ 1/60/120V)
7. INTERNAL JUNCTION BOX PROVIDED FOR EXHAUST FAN AND OPTIONAL SWITCHES
8. CONDUIT OPENINGS PROVIDED FOR FAN AND BLOWER MOTOR (INTERNAL WIRING TO FAN AND MOTOR JUNCTION BOXES BY OTHERS)
9. FORK SLOT COVERS PROVIDED FOR USE AFTER INSTALLATION
10. SEE PROJECT-SPECIFIC SUBMITTAL FOR OPTIONAL COMPONENTS

REVISIONS				
ZONE	REV.	DESCRIPTION	DATE	APPROVED
-	-	See Sheet1	-	-




DISCHARGE  
CONN.  
VARIES



NOTE:

1. INSTALL AND OPERATE ACCORDING TO O&M MANUAL.
2. DIMENSIONS SUBJECT TO CHANGE WITHOUT NOTICE.

UNLESS OTHERWISE SPECIFIED:		NAME	DATE	 UNIVERSAL BLOWER PAC, INC. 440 PARK 32 WEST DRIVE NOBLESVILLE, IN 46060-9252 PHONE: 317-773-7256 The Original Manufacturer www.universalblowerpac.com	
DIMENSIONS ARE IN INCHES		DRAWN	BD		
TOLERANCES:		CHECKED			
FRACTIONAL TO USER CONNECTIONS: ±1"		ENG APPR.			
FRACTIONAL TO MOUNTING LOCATIONS: 1/4"		MATERIAL		TITLE:	
OTHER FRACTIONAL: ±1		STOCK SIZE		3C HYBRID Size 1	
ANGULAR: MACH±0.5 BEND ±2		FINISH		SIZE DWG. NO.	
TWO PLACE DECIMAL ±0.05		DO NOT SCALE DRAWING		C 3C1H	
THREE PLACE DECIMAL ±0.005				SCALE: 1:10 SHEET 2 OF 2	